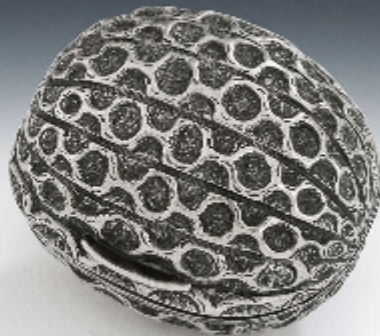


RESERVED - A rare naturalistic "Walnut" Nutmeg Grater made in Birmingham in 1859 by Hilliard & Thomason.

Sold



REF: 375171

## Description

The Nutmeg grater comes from the "Naturalistic" period and is realistically modelled as an English Walnut, with textured surface on a matted ground. The grater opens up to reveal a steel grater with silver rim. This piece is in excellent condition and is very well marked on the bezel. The walnut does not appear on the market often and an identical example is shown in the catalogue of the Robert & Meredith Green Collection of Nutmeg Graters, page 41. This item is reserved.Length: 1.5 inches, 3.75 cm.Width: 1.25 inches, 3.13 cm